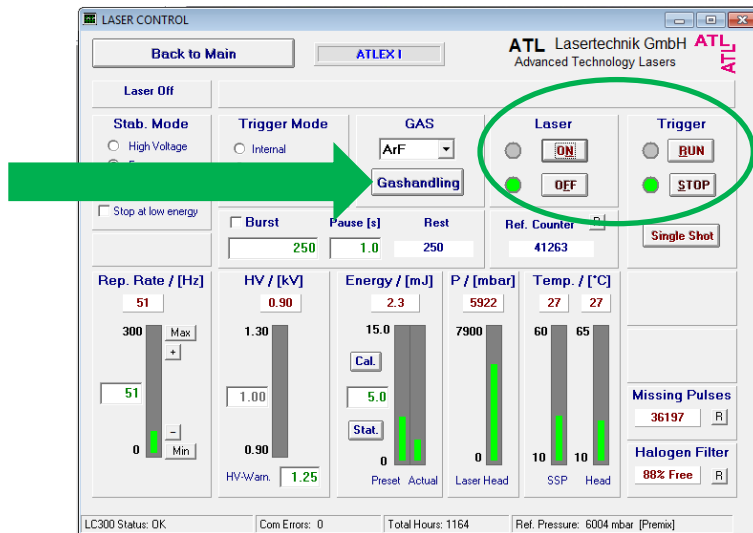
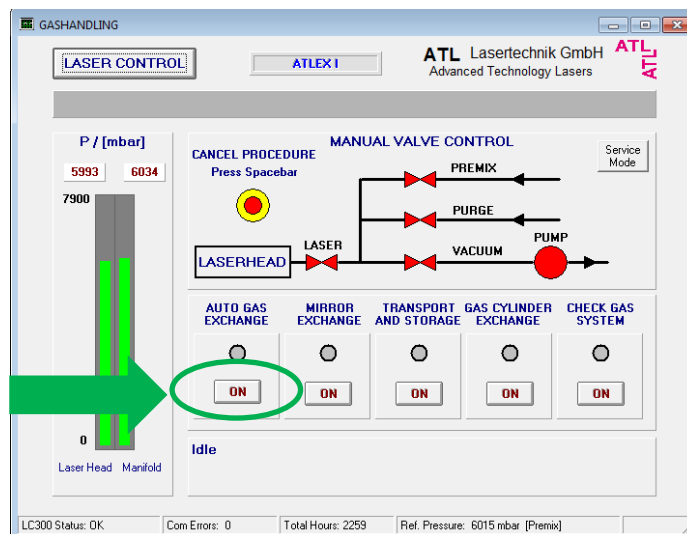


**OPTEC Laser – Changing the Gas in the cavity**

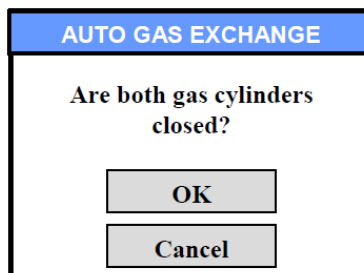
1. From the “ATLEX Control Software”, click “Trigger STOP”, “Laser OFF” and on “Gashandling”.



2. Click “ON” below “Auto Gas Exchange”.



3. The first message on the screen will be:

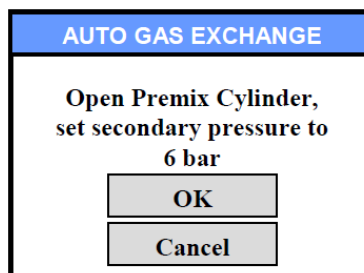


Go in the grey room (behind the laser), open the gas box, and verify that main cylinder valves and secondary pressure valves of both gas bottles are closed.

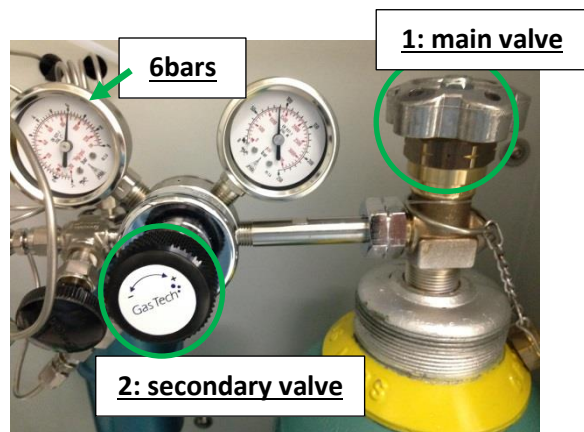


- 4. Then accept by clicking on OK. The vacuum pump will now be switched on and the premix line will be evacuated from old gas. The lower Status Bar will display "Auto Gas Exchange In Process".

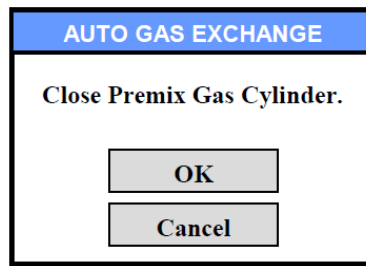
The next message will be:



- 5. Go in the grey room (behind the laser) and on the Premix gas bottle (bottle on the right side):
  - 1: Open the main cylinder valve
  - 2: Set the secondary valve to read 6bars

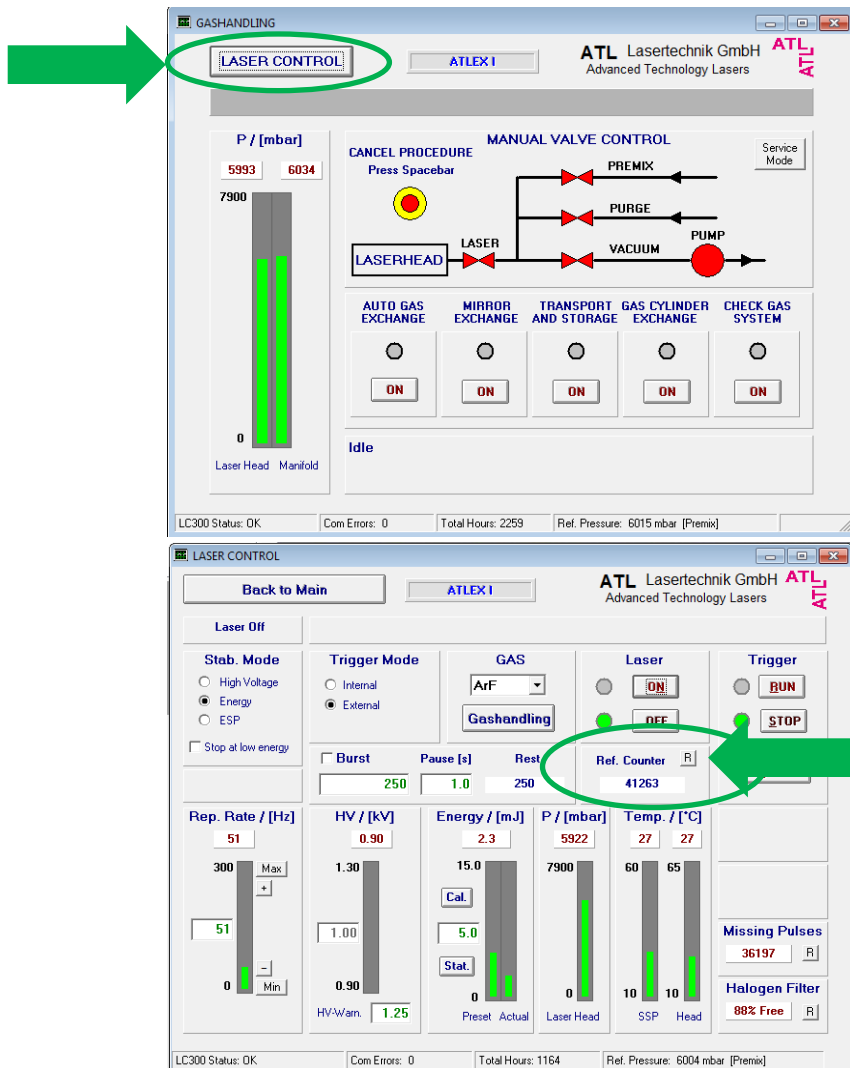


- Then accept by clicking on OK and wait for full gas renewal. The final message should show:



- Go in the grey room (behind the laser), close the main cylinder valve and secondary pressure valve and close the gas box. Then validate the final message by clicking on OK.

- Click on "Laser Control" and reset the Ref. Counter by clicking on "R"



- Reduce the laser manual control window.