

Z06 Nikon eclipse LV150 – how to start kappa software

TL;DR: Metro; ImageBase Name: cmi ; KappalmageBaseMetro: “Camera->Open/CloseControl Dialog” ;
KCC-Zelos: Load ; Metro: File-SaveAs. 160112ksu

The software reading out the image from this microscope is not a single piece, but scattered and buggy.
These lines tell step by step how to obtain and save a picture.

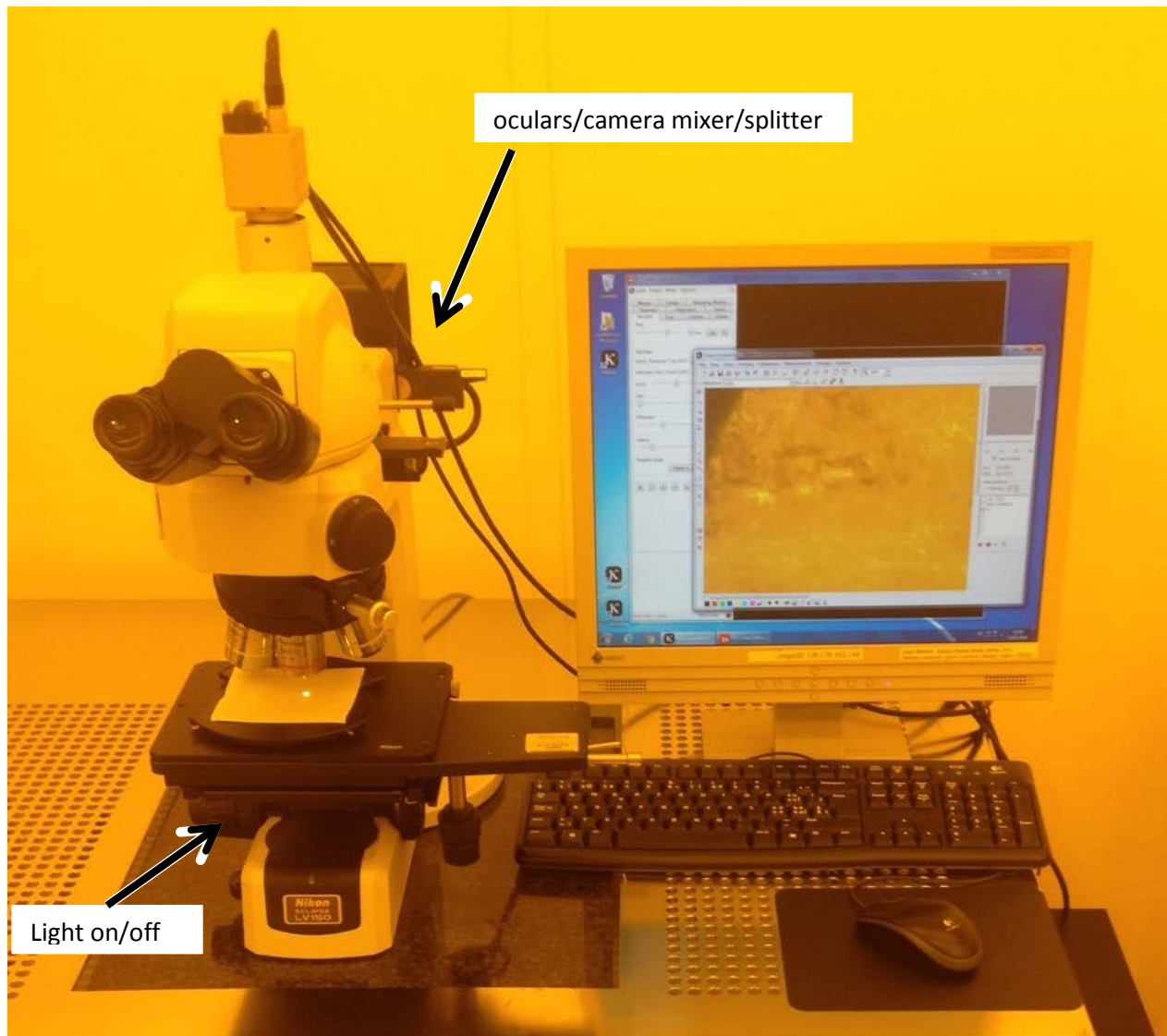


Fig 1: Microscope Nikon eclipse LV150.

First load your sample, make sure you get light where you want it, then focus on the sample.

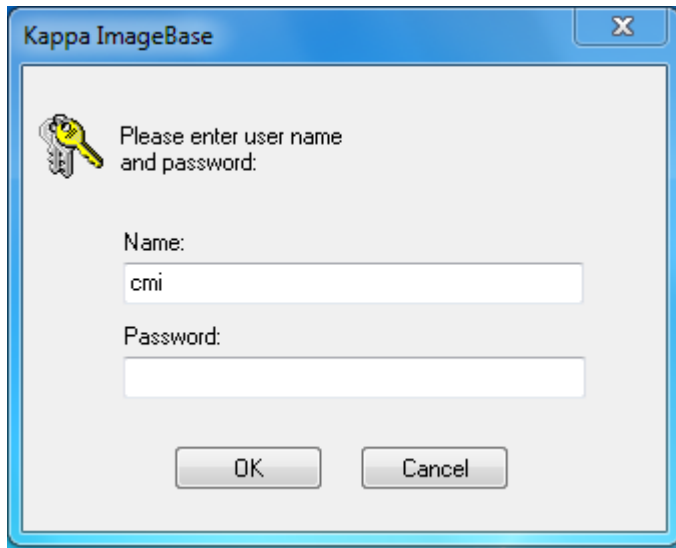
When the computer has rebooted out of necessity or not, login per standard cmigepc login, password often affixed on the side of the machine.



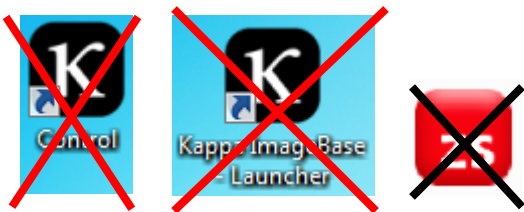
On the desktop, doubleclick on the “Metroo” ikon.

If the ikon is gone, find it in "C:\Program Files (x86)\Kappa\ImageBase\Metroo\Metroo.exe"

There is a popup asking you for a “Name”, type in “cmi” (all lowercase), no password, then click “OK”. Carefull, this popup does not raise to the top or to attention, you must fish for it.

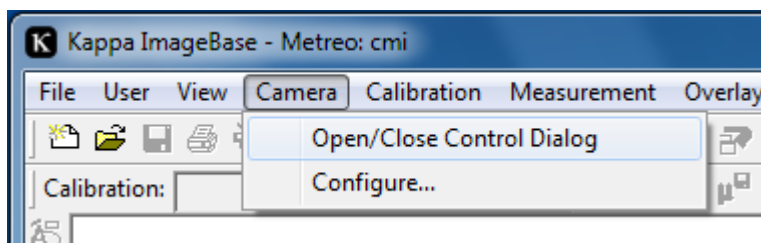


Do not start the “Control” or the “Kappa OImageBase Launcher” or the “ZS Zelos” interfaces, however tempting they may seem when struggling with “Metroo”.



The window that comes up is called “Kappa ImageBase – Metroo”.

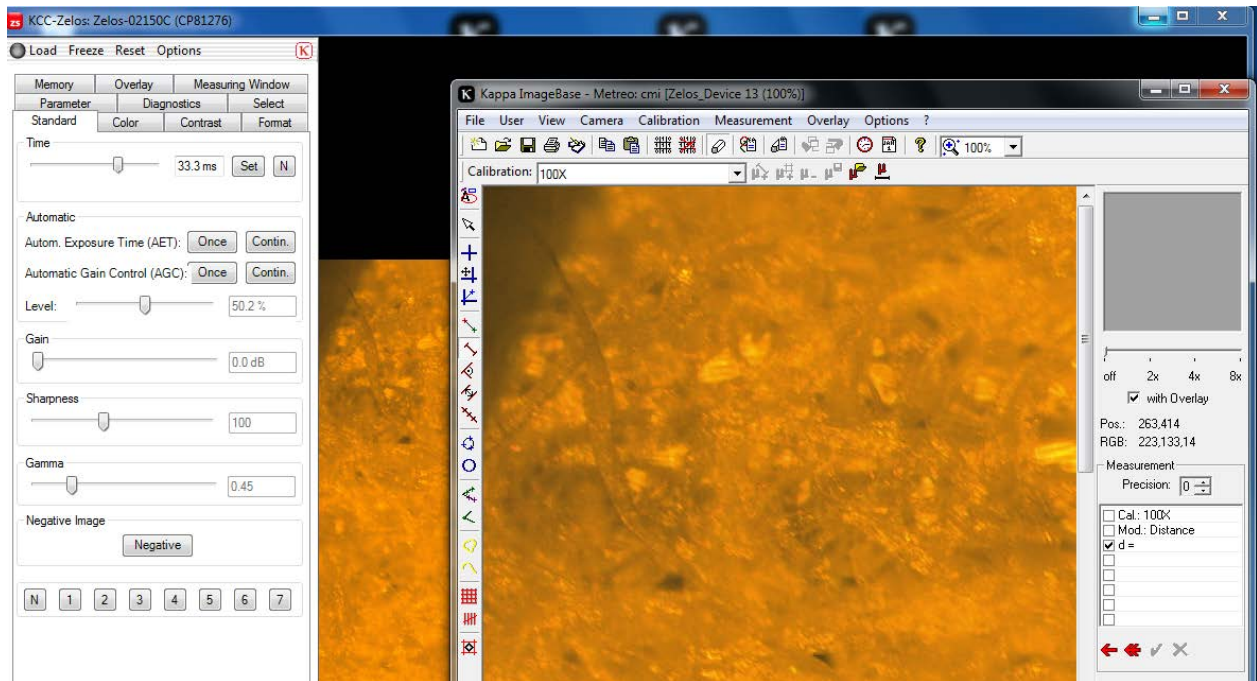
Go and ask for “Camera->Open/CloseControl Dialog”



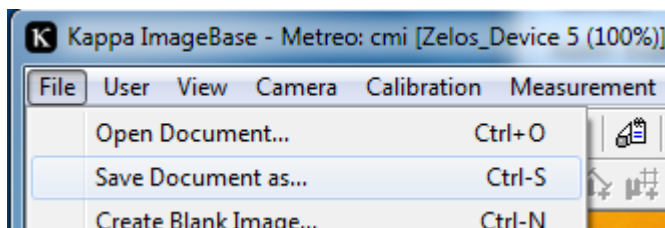
A transient popup will appear, then disappear:



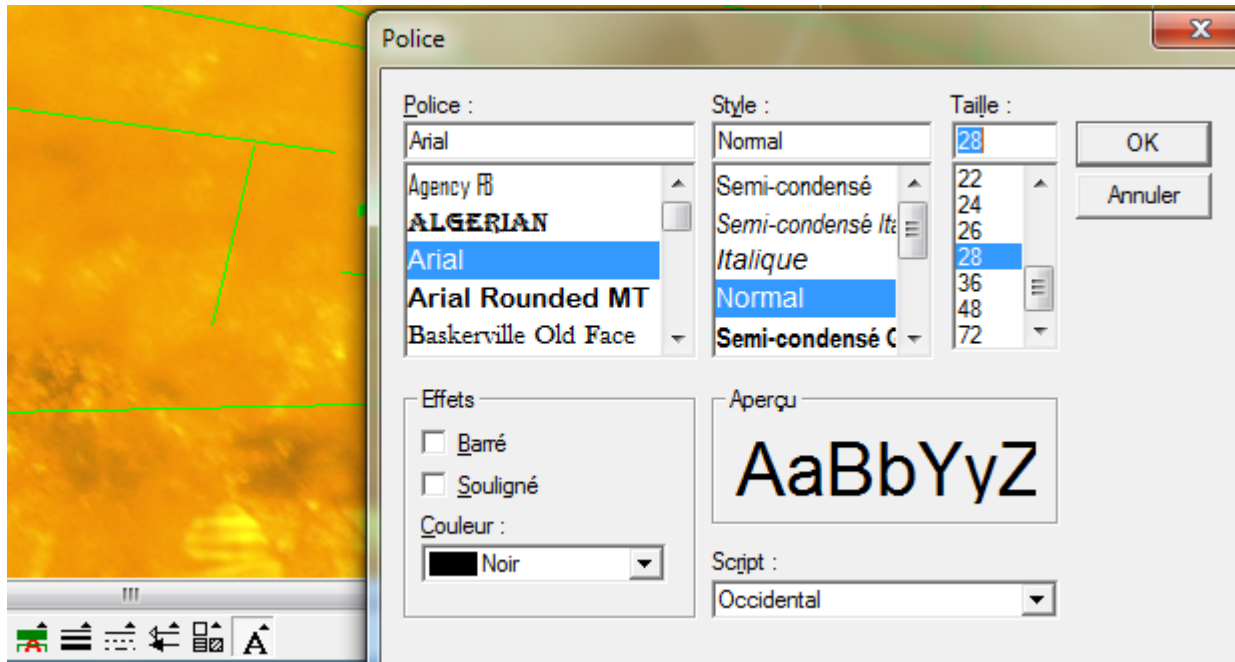
Then a big microscope feed “KCC-Zelos” will appear. Use that to adjust your exposure parameters.



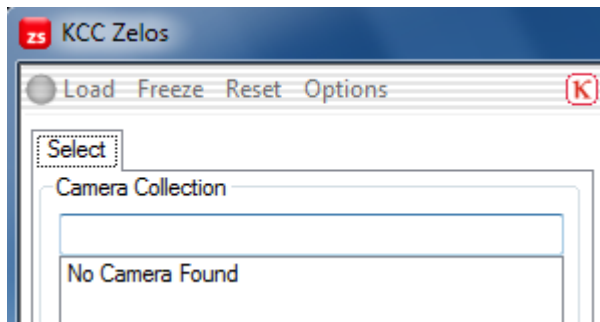
When you are happy with the picture, hit the “Load” button, and the picture will be copied to the “KappalImageBase-Metro”, where you can save it with “Ctrl-S”.



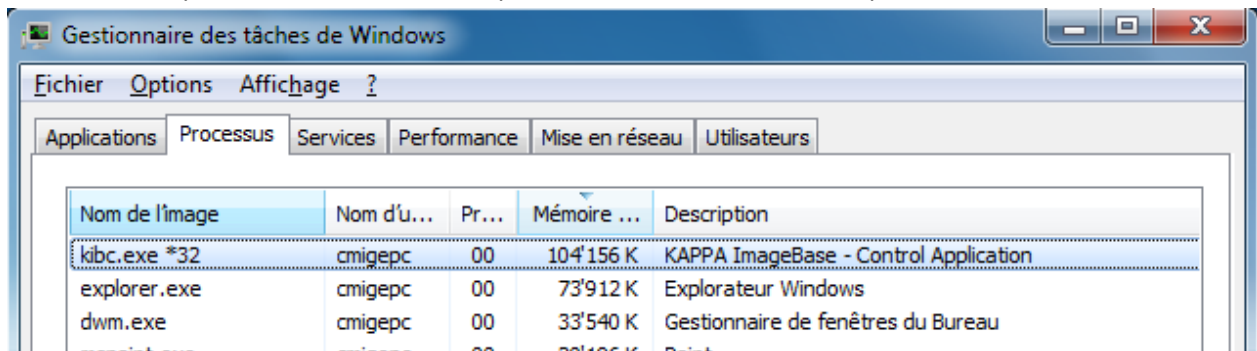
In the “Metro” window it is possible to make annotations, but this is not what I call an easy figure-it-out-able interface. It will come in handy to have a lot of time on your hands. For starters, make sure that the font is visible, such as 24point or bigger, with a black ink on a transparent background (the default was fluorescent green on a pink background).



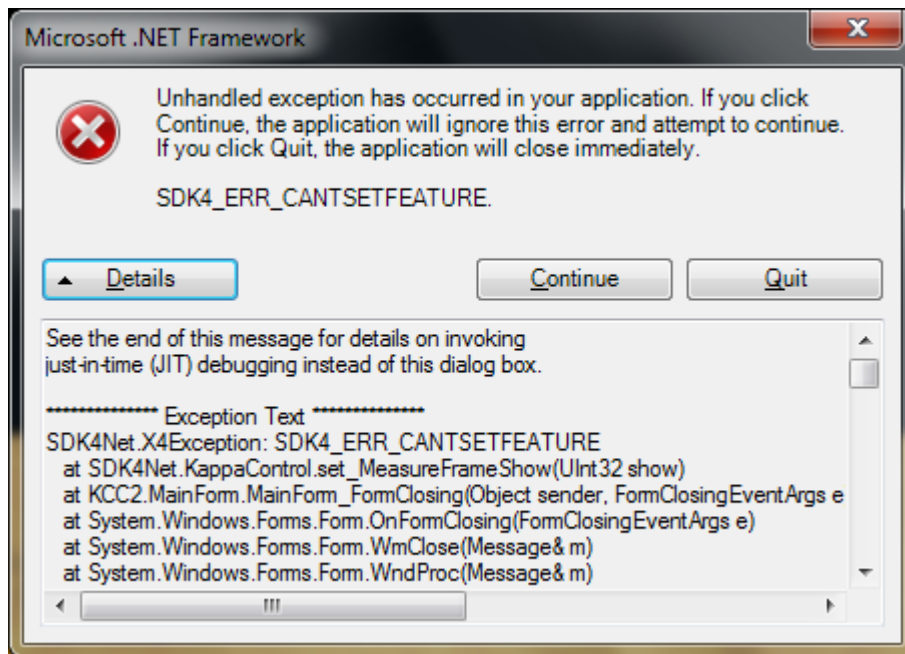
If you loose the camera for some random reason:



then I recommend that you just close all the windows, then open the process manager with “ctrl-shift-escape” and kill the “kibc.exe” process. I have not found an explanation nor an alternative.



If you get repeatedly exception such as this one:



Then I recommend to reboot the windows pc and start from anew.

Enjoy!